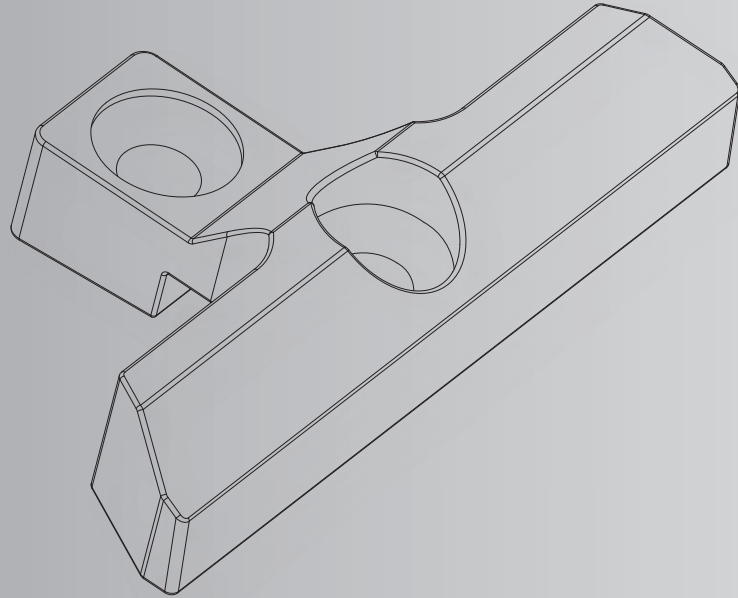


11

Fornax PvcAction  
Pencere ve Kapı  
Kilit Pimi Karşılıkları





Fornax PvcAction  
Pencere ve Kapı  
Kilit Pimi Karşılıkları

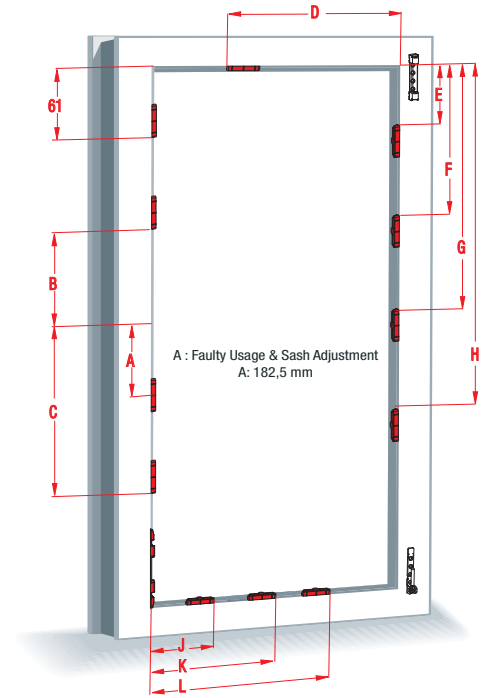
## İÇİNDEKİLER

<u>Sürme İspanyolet Karşılıkları</u>	230
<u>Güvenlik Pimli İspanyolet Karşılıkları</u>	231
<u>Eksantrik Pimli İspanyolet Karşılıkları</u>	232

Fornax PvcAction  
Pvc Çift Açılım Donanımları  
Karşılık Montaj Talimatı

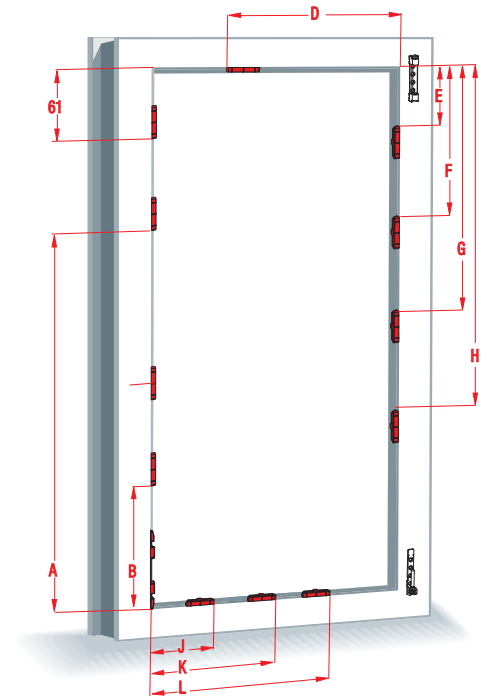
Kol Yeri Orta İspanyoletli Sistemler için Karşılık Montaj Şeması

Ürün	Grup	Kullanım Aralığı	A	B	C	
Kol Yeri Ortada İspanyolet	GR 01	295-295-600	-	-	-	
	GR 02	571-701	-	-	-	
	GR 03	701-900	391	-	-	
	GR 04	901-1100	541	-	-	
	GR 05	1101-1300	641	-	-	
	GR 06	1301-1500	741	-	-	
	GR 07	1501-1700	995	352	-	
	GR 08	1701-1900	1275	632	-	
	GR 09	1901-2100	1275	632	-	
Ürün	Grup	Kullanım Aralığı	-	-	D	
Kasa Kanat Makas	GR 01	395-600	-	-	-	
	GR 02	595-800	-	-	-	
	GR 03	795-1000	-	-	545	
	GR 04	995-1200	-	-	545	
	GR 05	1195-1400	-	-	784	
	GR 06	1395-1600	-	-	868	
Ürün	Grup	Kullanım Aralığı	E	F	G	H
Orta Kilitleme (Arka Kullanım)	GR 00	400-800	148	-	-	-
	GR 01	700-1150	148	481	-	-
	GR 02	1150-1350	148	681	-	-
	GR 03	1350-1850	148	481	1181	-
	GR 04	1850-2100	148	685	1425	-
	GR 05	2100-2400	148	481	1081	1724
Ürün	Grup	Kullanım Aralığı	-	J	K	L
Orta Kilitleme (Alta Kullanım)	GR 00	400-800	-	130	-	-
	GR 01	700-1150	-	130	463	-
	GR 02	1150-1350	-	130	663	-
	GR 03	1350-1850	-	130	463	1189

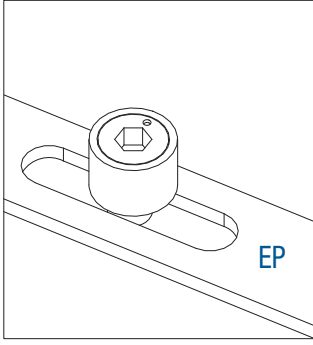


Kol Yeri Sabit İspanyoletli Sistemler için Karşılık Montaj Şeması

Ürün	Grup	Kullanım Aralığı	A	B	C	
Kol Yeri Sabit İspanyolet	GR 01	295-295-600	-	-	-	
	GR 02	571-701	-	-	-	
	GR 03	701-900	391	-	-	
	GR 04	901-1100	541	-	-	
	GR 05	1101-1300	641	-	-	
	GR 06	1301-1500	741	-	-	
	GR 07	1501-1700	995	352	-	
	GR 08	1701-1900	1275	632	-	
	GR 09	1901-2100	1275	632	-	
Ürün	Grup	Kullanım Aralığı	-	-	D	
Kasa Kanat Makas	GR 01	395-600	-	-	-	
	GR 02	595-800	-	-	-	
	GR 03	795-1000	-	-	545	
	GR 04	995-1200	-	-	545	
	GR 05	1195-1400	-	-	784	
	GR 06	1395-1600	-	-	868	
Ürün	Grup	Kullanım Aralığı	E	F	G	H
Orta Kilitleme (Arka Kullanım)	GR 00	400-800	148	-	-	-
	GR 01	700-1150	148	481	-	-
	GR 02	1150-1350	148	681	-	-
	GR 03	1350-1850	148	481	1181	-
	GR 04	1850-2100	148	685	1425	-
	GR 05	2100-2400	148	481	1081	1724
Ürün	Grup	Kullanım Aralığı	-	J	K	L
Orta Kilitleme (Alta Kullanım)	GR 00	400-800	-	130	-	-
	GR 01	700-1150	-	130	463	-
	GR 02	1150-1350	-	130	663	-
	GR 03	1350-1850	-	130	463	1189

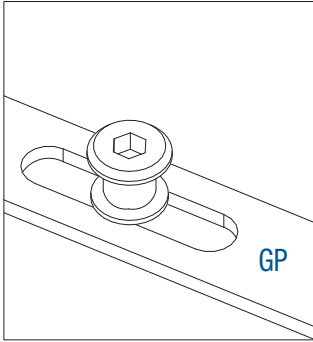


Fornax PvcAction  
Pencere ve Kapı  
Kilit Pimi Karşılıkları



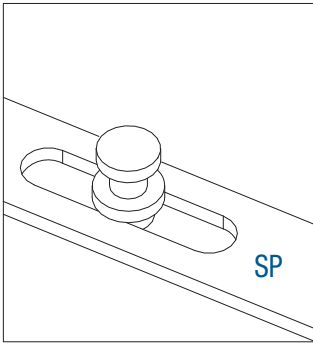
**EP : Eksantrik Pim**

- SW4 anahtar ile +/- 0,8 mm Kanat baskı ayarı imkanı sağlar.
- Özel tasarım pim burcu; karşılık ve pim arasında sürtünmeyi minimize ederek ağır conta baskısında dahi sistemin rahat ve sessiz çalışmasını sağlar.
- Burçsuz karşılıklara göre sürtünmeyi minimize eden özel yapısı sayesinde uzun ömürlüdür.
- Profile uyumlu olan tüm standart kilitleme karşılıkları ile maksimum verimlilikte çalışır.



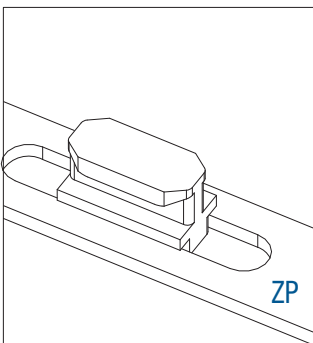
**GP : Güvenlikli Pim**

- SW4 anahtar ile +/- 0,8 mm Kanat baskı ayarı imkanı sağlar.
- Özel tasarım mantar baş yapısı; Eksantrik Pime (EP) göre daha yüksek güvenlik seviyesi sunar ve diğer mantar başlı pimlere göre sistemin rahat ve sessiz çalışmasına imkan sağlar.
- Kopma ve kırılmalara yüksek direnç gösterebilen özel malzemeden imal edilmiştir. Bu sayede diğer güvenlikli karşılıklara göre daha uzun ömürlüdür.
- Profile uyumlu olan Fornax güvenlikli kilitleme karşılıkları ile maksimum verimlilikte çalışır.



**SP : Sürme Pim**

- Özel formu sayesinde uzun süre peccerinizde rahat kullanım imkanı sağlar
- Kopma ve kırılmalara yüksek direnç gösterebilen özel malzemeden imal edilmiştir. Bu sayede diğer sürme karşılıklara göre daha uzun ömürlüdür.
- Profile uyumlu olan tüm sürme kilitleme karşılıkları ile maksimum verimlilikte çalışır.



**ZP : Zamak Pim**

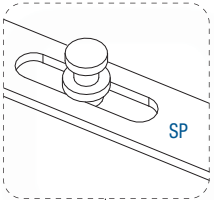
- Özel formu sayesinde uzun süre peccerinizde rahat kullanım imkanı sağlar.
- Standart sürme pime (SP) göre daha yüksek güvenlik seviyesi sunar.
- Profile uyumlu olan tüm sürme kilitleme karşılıkları ile maksimum verimlilikte çalışır.

Fornax PvcAction  
Pencere ve Kapı  
Sürme Pim Karşılıkları

220.122.002.000

Series : Wintech Sürme (Sliding)

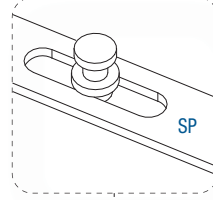
1000



220.122.017.000

Series : Wintech Combi Sürme (Sliding)

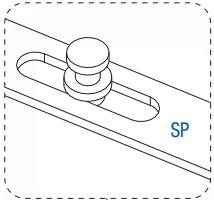
1000



220.134.002.000

Series : Fırat Sürme (Sliding)

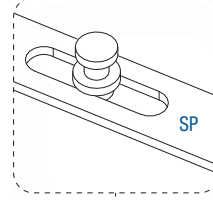
1000



220.144.001.000

Series : Sac Sürme (IronSheet Sliding)

1500

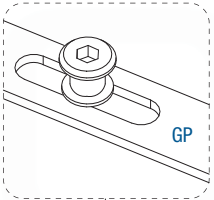


Fornax PvcAction  
Pencere ve Kapı  
Güvenlikli Pim Karşılıkları

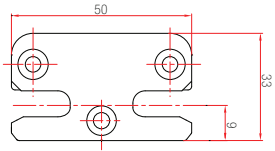
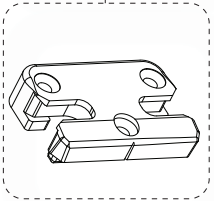
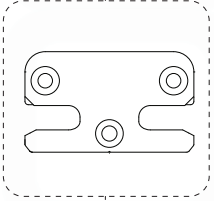
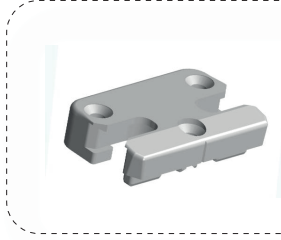
189.100.002.000

Series : Güvenlikli Yan Kilitleme Karşılığı 9 Aks (3S)

500



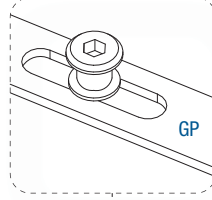
GP



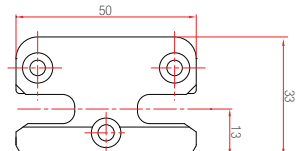
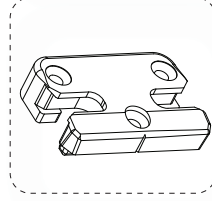
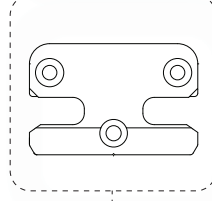
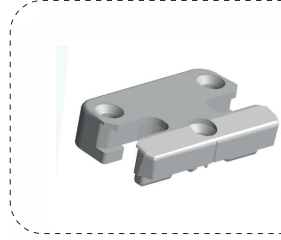
189.100.001.000

Series : Güvenlikli Yan Kilitleme Karşılığı 13 Aks (3S)

750



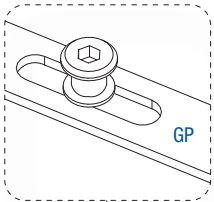
GP



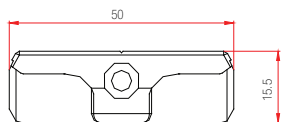
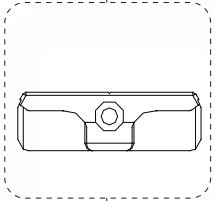
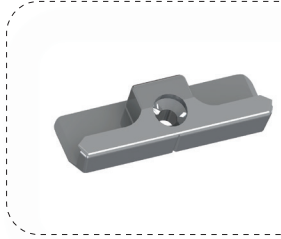
189.100.003.000

Series : Güvenlikli Yan Kilitleme Karşılığı 9 Aks (1S)

1000



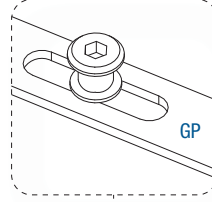
GP



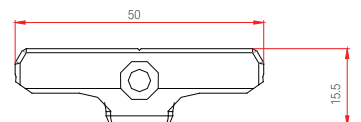
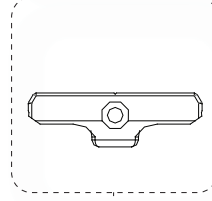
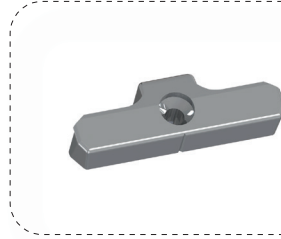
189.100.004.000

Series : Güvenlikli Yan Kilitleme Karşılığı 13 Aks (1S)

1000



GP

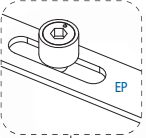


Fornax PvcAction  
Pencere ve Kapı  
Eksantrik Pim Karşılıkları

220.001.001.000

Series : Alfapen Armada 13 Aks

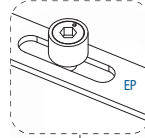
1000



220.997.001.000

Series : Al-Mimari 13 Aks

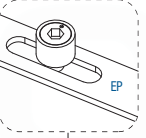
1000



220.128.001.000

Series : Asaşpen 5200 9 Aks

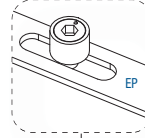
1000



220.128.002.000

Series : Asaşpen 6022 (Y.Hayat) 9 Aks

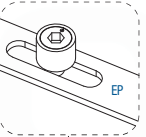
1000



220.128.003.000

Series : Asaşpen 6040-7050 13 Aks

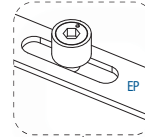
1000



220.128.004.000

Series : Asaşpen 7051-1251-1252 13 Aks

1000

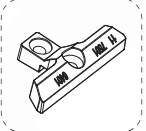
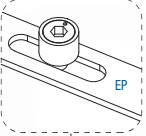


Fornax PvcAction  
Pencere ve Kapı  
Eksantrik Pim Karşılıkları

220.128.006.000

Series : Asaş 6401-7051

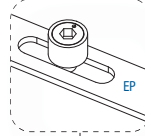
1000



220.995.001.000

Series : İmat Alüminyum (Aluminium)

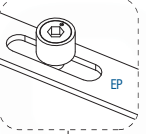
1000



220.005.002.000

Series : Bilkapen 13 Aks

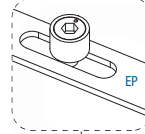
1000



220.005.001.000

Series : Bilkapen Gold 13 Aks

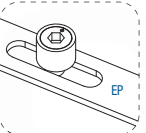
1000



220.130.001.000

Series : Egepen Everest 9 Aks

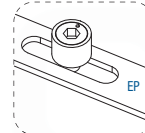
1000



220.130.001.000

Series : Egepen Max 13 Aks

1000



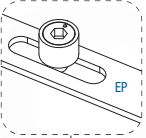


Fornax PvcAction  
Pencere ve Kapı  
Eksantrik Pim Karşılıkları

220.130.003.000

Series : Egepen Zendow 9 Aks

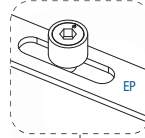
1000



220.131.001.000

Series : Enderpen 13 Aks

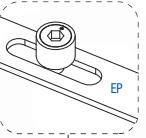
1000



220.024.001.000

Series : Thyssen 9 Aks

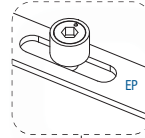
1000



220.129.002.000

Series : Erpen Extraline 13 Aks

1000



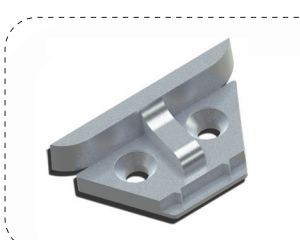
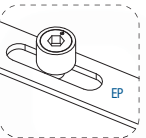
✓ Uyumlu Profiller

- Erpen 62-72mm 13 Aks
- Körmerling 13 Aks
- Resman 13 Aks
- KBE AD 70 13 Aks
- Plasco 13 Aks

220.129.001.000

Series : Erpen Radline

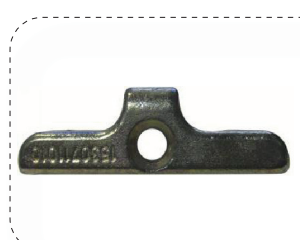
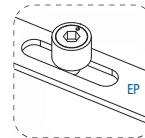
1000



220.129.004.000

Series : Erpen Smartline

1000

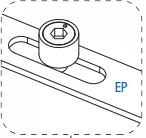


Fornax PvcAction  
Pencere ve Kapı  
Eksantrik Pim Karşılıkları

220.139.003.000

Series : Erpen Universal

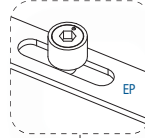
500



220.133.001.000

Series : Europen Dorion 13 Aks

1000



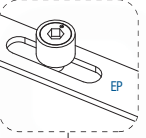
Uyumlu Profiller

- Aksupen 13 Aks
- Schüco 13 Aks
- Veka 13 Aks

220.133.002.000

Series : Europen Elit 9 Aks

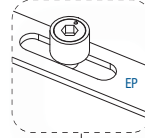
1000



220.134.001.000

Series : Firat 9 Aks

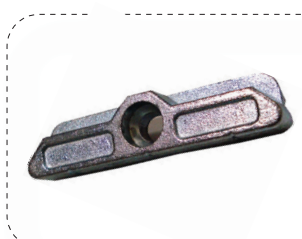
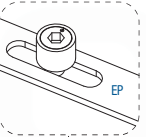
1500



220.998.001.000

Series : Rehau 13 Aks

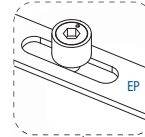
1500



220.013.001.000

Series : Profine İnfinite 6032 9 Aks

1000

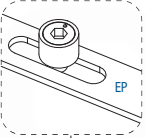


Fornax PvcAction  
Pencere ve Kapı  
Eksantrik Pim Karşılıkları

220.132.001.000

Series : Keban 6002 13 Aks

1000



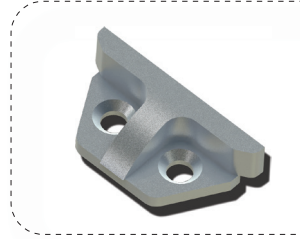
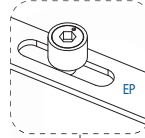
Uyumlu Profiller

- Naturel 13 Aks
- Güneşten Açmaya 13 Aks

220.132.002.000

Series : Keban 600-E 9 Aks

1000



220.008.001.000

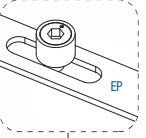
Series : Kmg 9 Aks

1250

220.132.003.000

Series : Keban 4600 9 Aks

1000



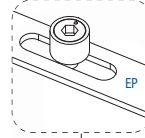
Uyumlu Profiller

- Kmg 9 Aks
- Adopen 55 Series 9 Aks
- Vega Tekoplast 9 Aks
- Veka 9 Aks

220.134.001.000

Series : Fırat 9 Aks

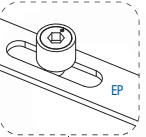
1500



220.010.001.000

Series : Kompen Pencere 9 Aks (Window)

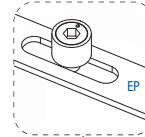
1000



220.010.002.000

Series : Kompen Kapı 13 Aks (Door)

750

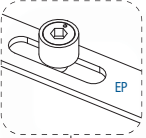


Fornax PvcAction  
Pencere ve Kapı  
Eksantrik Pim Karşılıkları

220.125.001.000

Series : Pensa 13 Aks

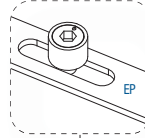
1000



220.993.001.000

Series : Pakpen 9 Aks

1000



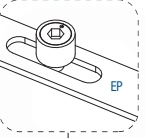
✓ Uyumlu Profiller

- Filpen 9 Aks
- Günelpen 9 Aks
- Yıldızpen 9 Aks
- Trocal/900 9 Aks
- Önderpen 9 Aks
- Ömekpen 9 Aks
- Erpen Radline 9 Aks

220.121.002.000

Series : P.919911200 Quadro 9 Aks

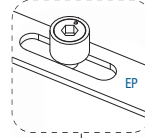
1000



220.994.001.000

Series : Plaspen 9 Aks

1000



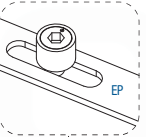
✓ Uyumlu Profiller

- Aksuper 9 Aks
- Schüco 9 Aks
- Veka 9 Aks

220.121.001.000

Series : Standart (P-AY705500001) 13 Aks

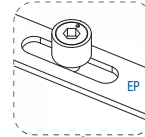
1000



220.018.001.000

Series : Plastherm 13 Aks

1000

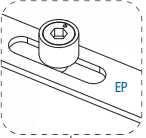


Fornax PvcAction  
Pencere ve Kapı  
Eksantrik Pim Karşılıkları

220.015.002.000

Series : Roplasto 6001 MD 9 Aks

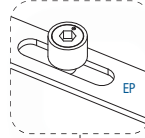
750



220.015.001.000

Series : Roplasto 6001 AD 9 Aks

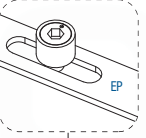
750



220.132.003.000

Series : Universal Hok 9 Aks

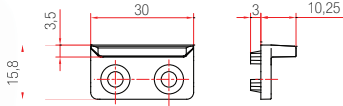
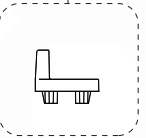
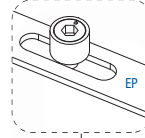
1000



220.122.016.000

Series : Wintech 55 9 Aks

1000



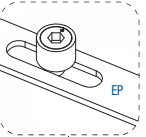
Uyumlu Profiller

- Akansupen 13 Aks
- Salamander 13 Aks
- Esenpen Milenyum 13 Aks
- Resmen 13 Aks
- Saraypen 13 Aks
- Schönline 13 Aks

220.127.001.000

Series : Shönlne 13 Aks

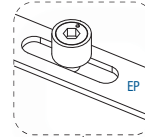
1000



220.122.003.000

Series : Wintech 13 Aks

1250



Uyumlu Profiller

- Dopen 752 Seri 13 Aks
- Esenpen Milenyum 13 Aks
- Kömmerling 13 Aks
- KBE AD 70mm 13 Aks
- Naturel 13 Aks
- Resmen 13 Aks
- Pascoo 13 Aks
- Schüco 13 Aks
- Saraypen 13 Aks

Fornax PvcAction  
Pencere ve Kapı  
Eksantrik Pim Karşılıkları

220.992.001.000

Series : Loumann 9 Aks

1000

